

DepthQ®

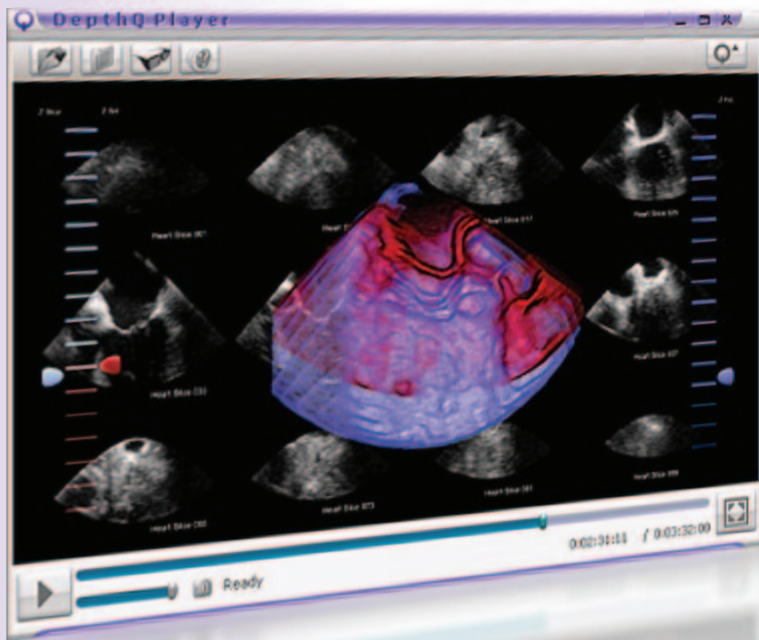
STEREOSCOPIC

Precision HD 3D

From *Lightspeed* DESIGN

DepthQ® Player™ for Stereoscopic Media

is a feature-packed software solution for the high-quality playback of stereo 3D movies from a standard PC.



Easy to use and designed from the ground up as a professional product, DepthQ® Player™ combines efficient code architecture and superior throughput for flawless high-bandwidth playback of either locally stored or URL-accessible stereoscopic movies, as well as 3D streaming IP video.

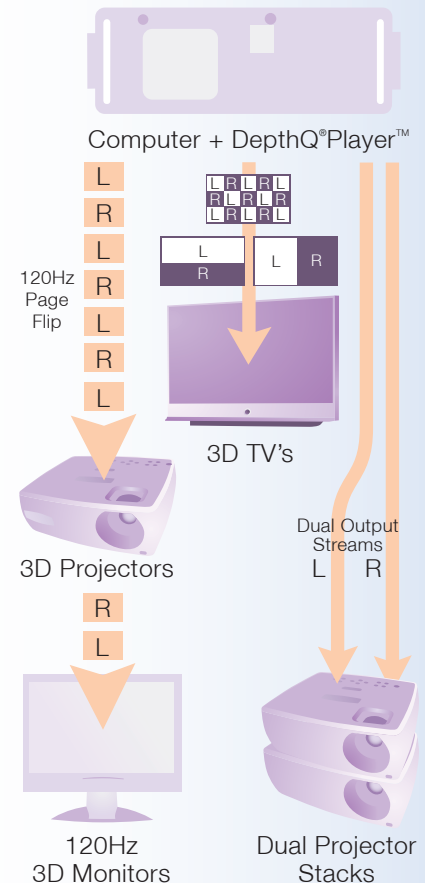
DepthQ® Player™ delivers the most comfortable-to-view stereo 3D experience possible, and allows cost-effective viewing of high-resolution stereoscopic media in a wide variety of environments – from remote 3D viewing stations, operating rooms and conference rooms to 3D cinemas, museum exhibits, portable theaters, motion simulators, corporate events and trade shows.

Configurations

DepthQ® Player™ is available in three configurations:

- ☑ **Lite** – A free-to-download demonstration version which accepts up to 1920x1080 60P per eye input, and delivers up to 1920x1080 60P* per eye output. Intended as evaluation software, DepthQ® Player™ Lite incorporates a subtle watermark, with modest restricted playlength and playlist functionality
- ☑ **Standard** – A licensed commercial version capable of displaying up to 1280x720 60P per eye specially tuned for the DepthQ® HD 3D video projector
- ☑ **Pro** – A licensed professional version capable of displaying up to 1920x1080 60P* per eye and beyond, with enhanced feature-set and functionality

*Your hardware must be up to the task: High-bandwidth outputs require more powerful CPU's and GPU's.



DepthQ® Player™ can display your films in a variety of selectable output 'flavors' in order to drive the many different types of stereoscopic displays available, including the highest-quality stereoscopic format - progressive "page flip" (frame sequential) - at refresh rates up to 120 Hz.

Additionally, DepthQ® Player™ supports both single and dual graphics output pipelines.

nVidia® 3D Vision™ compatible.

DepthQ®

STEREOSCOPIC

For more information please call +1.206.784.1385

www.depthq.com

Technical Features

- Primary display output: progressive OpenGL quad-buffered frame-sequential “page-flip” (Analog RGB, Digital DVI).
Optional display output: nVidia[®] 3D Vision™ stereoscopic renderer.
- **DepthQ[®] Player™ Lite** – Evaluation version. Supports input and output up to High Definition (HD) 1080 60P per eye, display refresh up to 120Hz. Subtle watermark added, with playback length, playlist and advanced feature restrictions.
- **DepthQ[®] Player™ Standard** – Supports input and output up to High Definition (HD) 720 60P per eye, display refresh up to 120Hz.
- **DepthQ[®] Player™ Pro** – Supports input and output up to High Definition (HD) 1080 60P per eye (1920x1080 and beyond), display refresh up to 120Hz, plus enhanced feature set including image GPU processing and Time Code controlled IN, OUT, Parallax, and DMX events.
- Supports a variety of data and compression formats: DQ3D*, H.264/MPEG-4 AVC, MPEG-4, MPEG-2, DV, MJPEG, uncompressed, etc.**
- Supports IP Video streams via Windows Media video and Elecard video.
- Full-featured player interface, includes advanced playback controls and playlist support.
- Two operating modes: Basic Mode and password-protected Advanced Mode to ensure advanced configurations remain secure.
- Single pipeline output for active displays such as single lens DLP[®] stereoscopic projectors, CRTs and 3D-ready plasma screens, LCD monitors and rear-projection DLP[®] monitors.
- Dual pipeline output for passive displays based on stacked video projectors, LCD or DLP[®] (nVidia[®] Quadro graphics card required).
- Full Screen and Windowed stereoscopic display mode support in OpenGL mode (nVidia[®] 3D Vision™ is full screen only).
- Real-time zero parallax plane adjustments (vertical and horizontal).
Two methods are included, a traditional zero parallax-based adjustment and a guided infinity-based parallax adjustment.
- Savable presets allow your parallax plane adjustments (and other attributes like Volume, Aspect Ratio and Time Code events) to save with each movie as an associated DepthQ[®] Config (.DQC) file. Movies then self-correct when .DQC is present. Each movie in a playlist will import its own presets if present.
- Support for real-time GPU pixel-shading via Cg code (Pro only).
- Support for Time Code-based events including IN/OUT points, parallax offsets and DMX control of external devices (Pro only).
- Support for advanced multi-channel sound: Dolby Digital[®] 5.1 channel Sampling frequency:44,100-48,000 kHz.
Digital AES/EBU Analog XLR (third party audio decoder required).
- Supports a wide variety of stereoscopic media input formats: above/below, above/below for sync-doubling (with adjustable separation), relaxed or cross-eye (Side by Side), interlaced, Tri-Delta, SIS, autostereoscopic monitors[‡], etc.
- Support for still stereoscopic image visualization (JPG, BMP).
- On-the-fly conversion of interlaced NTSC/PAL TV-formatted stereoscopic DVD or MPEG-2 data to any supported output display format at playback (Must be ripped from DVD prior to playback).
- Support for a wide variety of display formats: DLP[®] projectors, 3D TV's, CRT monitors with LC shutter glasses, checkerboard displays, line-blanking hardware, synchronization doubling hardware, plus autostereoscopic monitors[‡].
- Additional output formats: Support for a wide range of hardware independent stereoscopic output formats: interlaced, above/below for sync doubling (with adjustable separation), relaxed or cross-eye (side-by-side), and a variety of anaglyph.

* The DQ3D codec is only provided with the purchase of DepthQ[®] Capture™, and is fully compatible with DepthQ[®] Player™.

** Some codecs require additional purchases.

‡ Autostereoscopic support not included with basic package.

Pricing

DepthQ[®] Player™ Lite: *Evaluation License - Free Download*

DepthQ[®] Player™ Standard: *Workstation, Single Seat Commercial - \$395*

DepthQ[®] Player™ Pro: *Workstation, Single Seat Commercial - \$995*

DepthQ[®] Player™ Pro: *Commercial Theater - Contact us for Pricing*



Lightspeed Design, Inc.
1611 116th Ave NE, Suite 112
Bellevue, WA 98004 USA
206.784.1385
www.depthq.com